



Forum 2024 - Knightshayes, Devon

Uncovering and Discovering Hidden History

Day 1 - Friday 11th October:

Meeting at the Old Heathcoat School Hall, Tiverton, then in the Walled Kitchen Garden at Knightshayes

9:00am Registration in the Old Heathcoat School - Tea and coffee available

9:45 Welcome and introductions

10:00 – 12:30 - Talks begin with a 15-20 minute break and refreshments at c.11.00am

Our Speakers:

- **Dr Siân Thomas** - Project Officer at Archaeology Wales Ltd.

'The Glasshouse and Walled Kitchen Garden at Althorp'

- **Lord (Julian) Darling** – owner Wood, Bishopsteignton

'The Walled Garden at Wood'

- **Will Woodman** – Head Gardener, Knightshayes

'The History and Future of the Kitchen Garden at Knightshayes'

After the morning session, we will go up to Knightshayes (2 miles) for lunch, in the polytunnel area above the garden, there will be signs to show you where to find us.

1:00pm **Lunch**

2:00pm - After lunch we will spend the rest of the afternoon in the Walled Kitchen Garden with Will Woodman and his team.

4:00 – 5:00pm - Tea and cake in the polytunnel - for discussions and Q&A

The day will officially end at 5:00pm

We have been recommended The Lost Kitchen as an excellent place to eat, just a few minutes from Knightshayes, but you must book a table.

Day 2 – Saturday 12th October

We will be travelling to visit three private gardens near Tiverton

10.00am - we will meet first at the Regency House, Hemyock, to the east of Tiverton, then drive to Ashley Court close to Tiverton, where we will also have lunch. We will finish the afternoon in the gardens at Holcombe Court, Holcombe Rogus.

The Regency House, Hemyock **Jenny Parsons**

The main feature of this garden is the wall, a double skinned wall of flint and brick surrounding three sides of the hugely productive vegetable and fruit garden. It's a fantastic construction of hand-made, crumbling bricks and awkward flints, in need of repair and full of old nails and plant supports. The house was built as the village rectory becoming a private house in the early 20th century. Despite its current name, it isn't actually Regency, but an early Victorian house, although built in a slightly archaic late-Georgian style. When Jenny arrived in 1990, there was very little garden, 'except a few big trees, very gratefully received, and the giant magnolia on the back of the house'.



Images cc Devon Gardens Trust



Ashley Court, Tiverton **Tara Frazer and Nigel Jones**

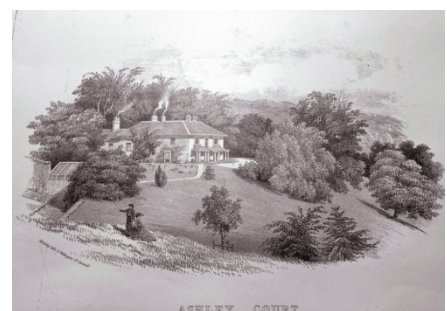
A small country house nestled deep in the Exe Valley is a hidden gem of Regency Devon's history. Built in 1805 by Captain William Dunsford to replace an earlier 17th Century dwelling of the same name, the house and its grounds have remained largely untouched ever since.

The walled kitchen garden, orchards and grounds at Ashley Court provide the raw ingredients for their vegetarian and vegan catering. Almost everything is seasonal, home grown, organic and/or locally sourced.

In the past the kitchen garden provided food for the family and staff, part of our restoration process has been to bring this back to life.

Tara and Nigel haven't found who first designed the gardens at Ashley Court but a lithograph from the 1820s shows a 'Repton-esque' layout with rolling fields and parkland running from the front door down to the river Exe in the style of the 18th century.

Image cc. Ashley Court



Holcombe Court
Nigel Wiggins

Grade I listed Holcombe Court is widely considered to be the finest Tudor house in Devon. Early C16, partly rebuilt in the mid C16, major late C16 modernisations, some late C17 modernisations, and listed Grade I in 1951.

Beyond the house are the stables, mostly C19, but incorporating older work; on the hill slope above, a walled garden (the wall dated 1748 and partly lined with brick inside), entered between gate piers with pineapples. West of the house a C19 balustraded terrace with steps down to a small lake.

The house has a long and fascinating history, but when Nigel Wiggins took ownership over 20 years ago, he also began restoration of the gardens and walled kitchen garden with head gardener Kathy Worner.



Image cc. Devon Gardens Trust

Maps and directions to each garden and details for parking will be sent out before the day.